



- 1 Chambre de Commerce 7, rue Alcide de Gasperi Luxembourg-Kirchberg
- 2 Bâtiment Albert Wagner
- 3 Bâtiment Jean Monnet
- 4 Cour de Justice Européenne
- 5 Banque Européenne d'Investissement
- 6 Hôtels Sofitel et Novotel
- 7 Cour des Comptes Européenne
- 8 Centre National Sportif et Culturel "d'Coque"
- 9 Ecole Européenne
- 10 Centre Commercial
- 11 Luxexpo
- 12 Utopolis

Public transports:

- **From the train station:** bus 18 direction "Luxembourg Kirchberg"
Stop: Jean Monnet
- **From the airport:** bus 16 direction "Hesper-Cité Um Schlass" or EUROBUS
Stop: Erasme / D'Coque

USEFUL INFORMATION

The event is **free** of charge.
Cancellations after 26 February will be invoiced at 100 euros.

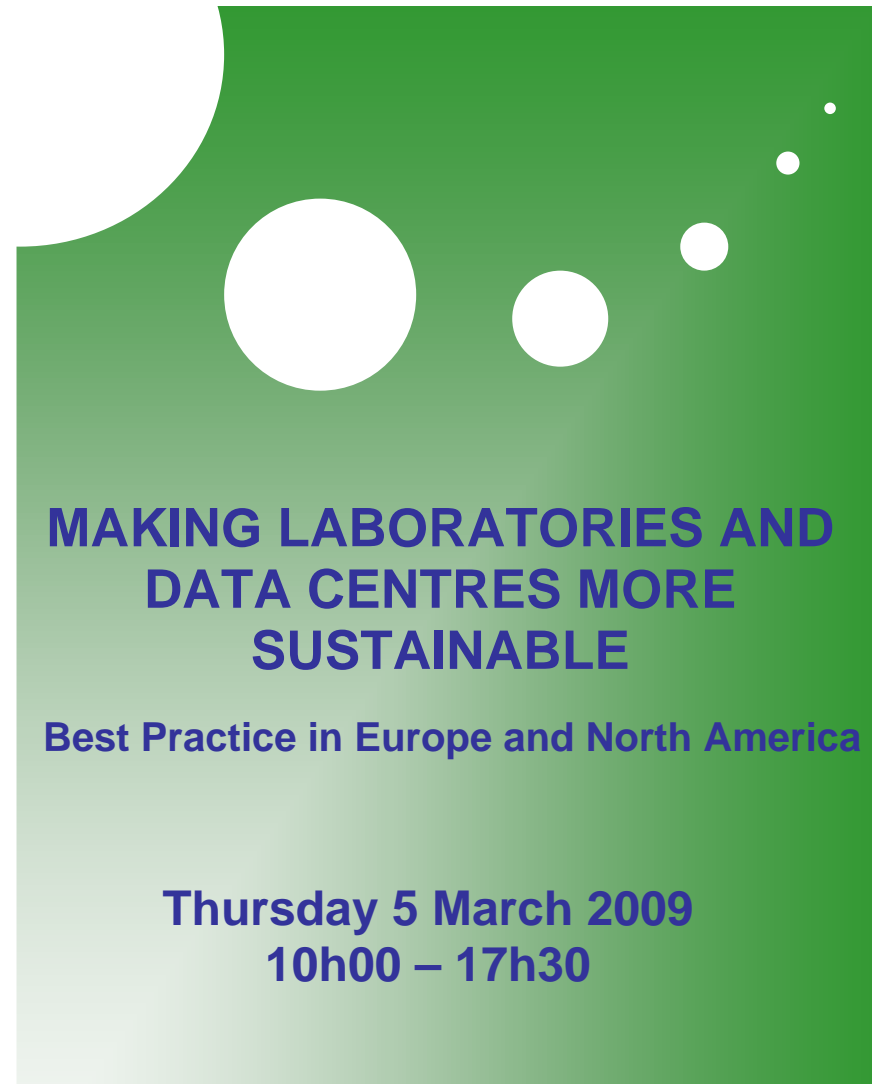
Date: Thursday 5 March 2009 / 10h00-17h30

Location: Chambre de Commerce
7, Rue Alcide de Gasperi
Luxembourg Kirchberg

Language : English

Registration by 10 February 2009 using the registration form, which can also be downloaded at:
http://www.en.uni.lu/_universite/developpement_durable/workshop_making_data_centres_and_laboratories_more_sustainable

Weblinks :
<http://www.uni.lu>
<http://www.heepi.org.uk/>
<http://www.cc.lu>



labs for the 21st century
Sponsored by:
U.S. Environmental Protection Agency
U.S. Department of Energy
International Institute for Sustainable Laboratories



labs for the 21st century
Sponsored by:
U.S. Environmental Protection Agency
U.S. Department of Energy
International Institute for Sustainable Laboratories

OVERVIEW

Rising costs, new regulations and stakeholder pressures are requiring a marked reduction in the energy and environmental footprint of data centres and laboratories. Best practice experience shows that this can be achieved without compromising - and indeed enhancing - safety, but knowledge of how to do this is not widespread. It also shows that many key problems and solutions, especially those associated with cooling and ventilation, are common to both facilities.

This event will distil and disseminate this best practice through presentations by international experts and leading companies, such as Novartis, which has one of the largest science campuses in Europe. It is co-organised by the University of Luxembourg (which will use the event to inform the design of its new data centre and science campus), the UK-based S-Lab (Safe, Successful, Sustainable Laboratories) project (www.heepi.org.uk), and the US Labs21 initiative (www.labs21century.gov). The Chambre de Commerce du Luxembourg is providing for the venue.

Objectives:

- Identify key requirements for the sustainable design of new data centres and laboratories.
- Connect research, users and practitioners engaged in designing, constructing and equipping laboratories and data centres.
- Support the development of a European network on sustainable laboratories, involving universities, commercial and public lab operators, and designers and suppliers.

The event will be of interest to:

- Architects, engineers involved in conceiving and constructing laboratories and IT server rooms.
- IT Directors and staff in organisations with large data centres, such as banks, governments, and universities.
- Senior managers and staff connected with laboratory research.
- Equipment manufacturers.
- National and European policy-makers active in the area of energy, environment, innovation and research.

For more information:

Visit: http://www.wen.uni.lu/l_universite/developpement_durable

Or contact :

Julien Carton, University of Luxembourg

Mail : julien.carton@uni.lu - Tel : +352 46 66 44 – 6366

PROGRAMME

Time	Programme activity
09.30 – 10.00	Registration and coffee
10.00 – 10.15	Welcome <i>Rolf Tarrach, Rector of the University of Luxembourg</i>
10.15 – 10.30	The University of Luxembourg's Science City project <i>Ariane König, Advisor to the Rector, University of Luxembourg</i>
10.30 – 11.00	Common issues and best practice in designing sustainable data centres and laboratories <i>Peter James, Professor of Environmental Management, University of Bradford, and Director, S-Lab Initiative, UK</i>
11.00 – 11.45	US approaches to sustainable data centres and laboratories <i>Geoffrey Bell, Professor in Energy, Environmental Energy Technology Div, Lawrence Berkeley Laboratory, USA & Labs21</i>
11.45 – 12.30	Case study: a sustainable, IT-intensive science campus <i>Reto Naef, Director of Research, Novartis</i>
12.30 – 14.00	Lunch
14.00 – 16.00	Parallel break-out sessions
(1) Data Centres	EU Code - <i>Liam Newcombe, British Computer Society, UK</i> Case 1 – High dense Data Centre energy efficiency, <i>Jean-Marc Denis, Bull, France</i> Case 2 – Innovations in Design, <i>Speaker from LuxConnect</i>
(2) Laboratories	The sustainable laboratory – Overview <i>Mike Dockery, Laboratory Design Consultant, Technical Director, S-Lab, UK</i> Ventilation for energy efficiency AND safety <i>Geoffrey Bell</i> Case – <i>To be confirmed</i>
16.00 – 16.15	Refreshment break
16.15 – 17.00	Final plenary – <i>practical and policy implications for the EU and Member States, and next steps towards a European initiative on sustainable laboratories and data centres</i>
17.00 – 17.30	Reception sponsored by the Chambre de Commerce